

ON-GUARD

GATE SECURITY CONTROL

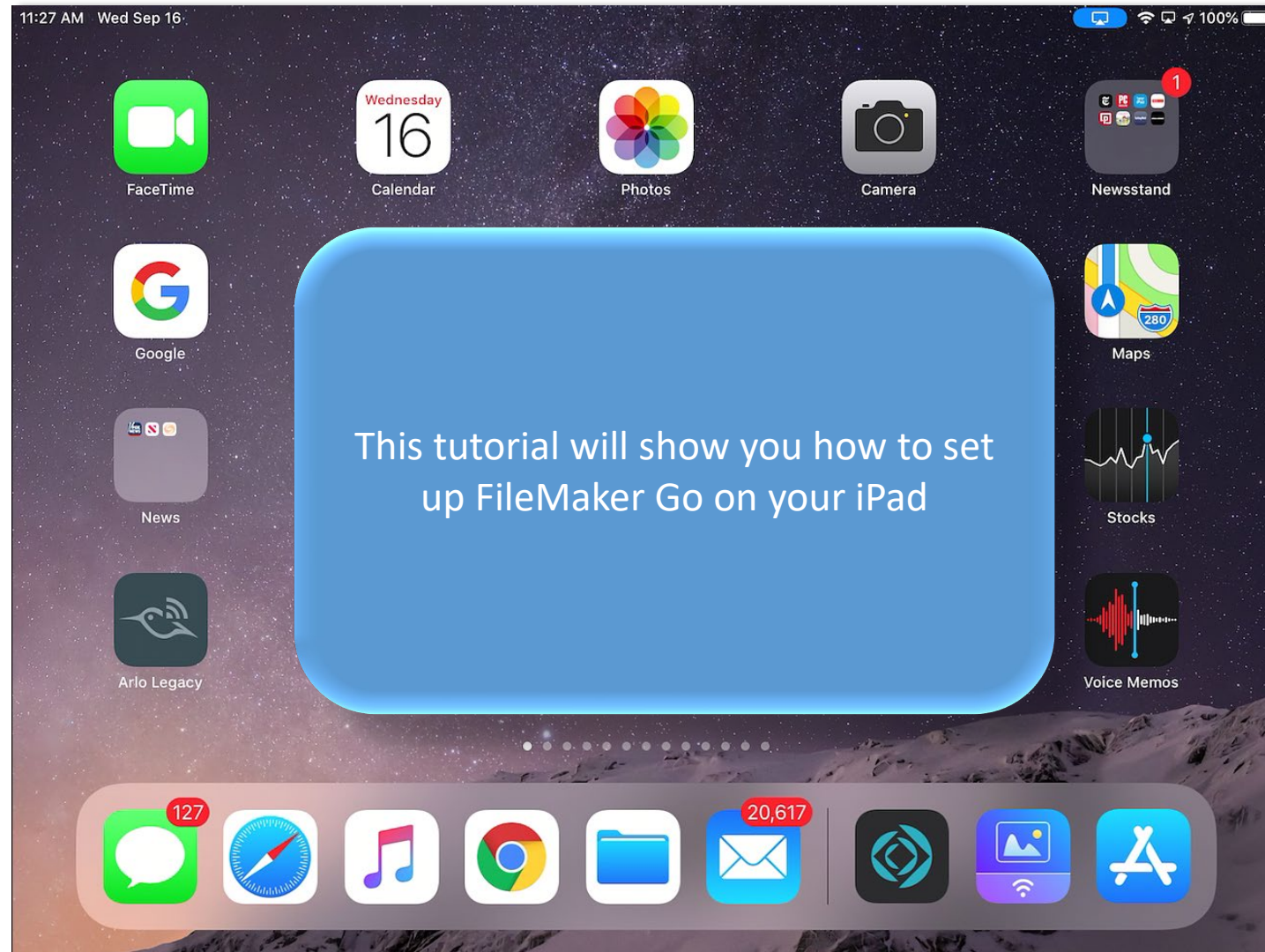


Tutorial Series

Setting Up FileMaker Go

The iPad Screen

ON-GUARD



The iPad Screen

ON-GUARD



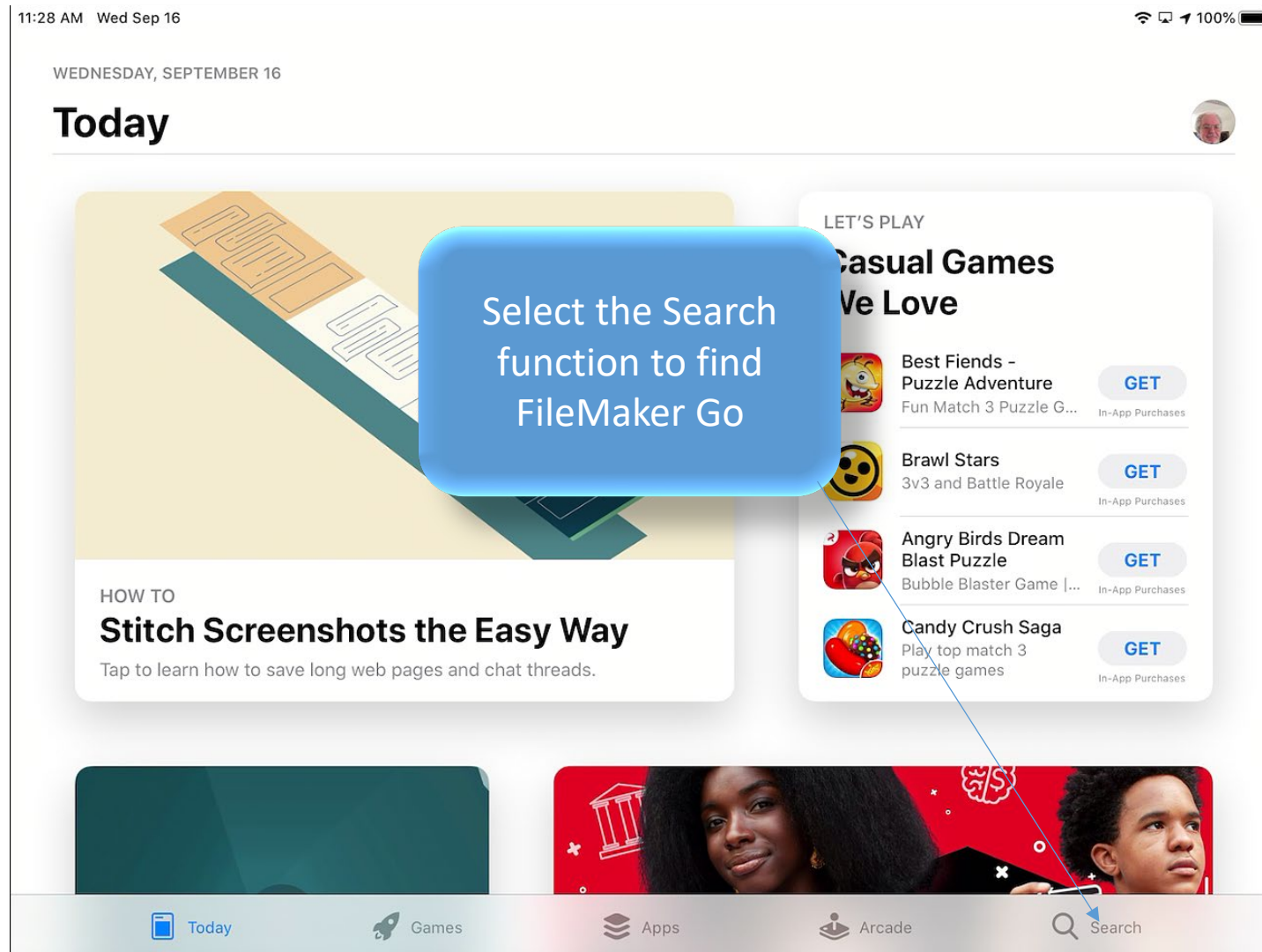
The iPad Screen

ON-GUARD



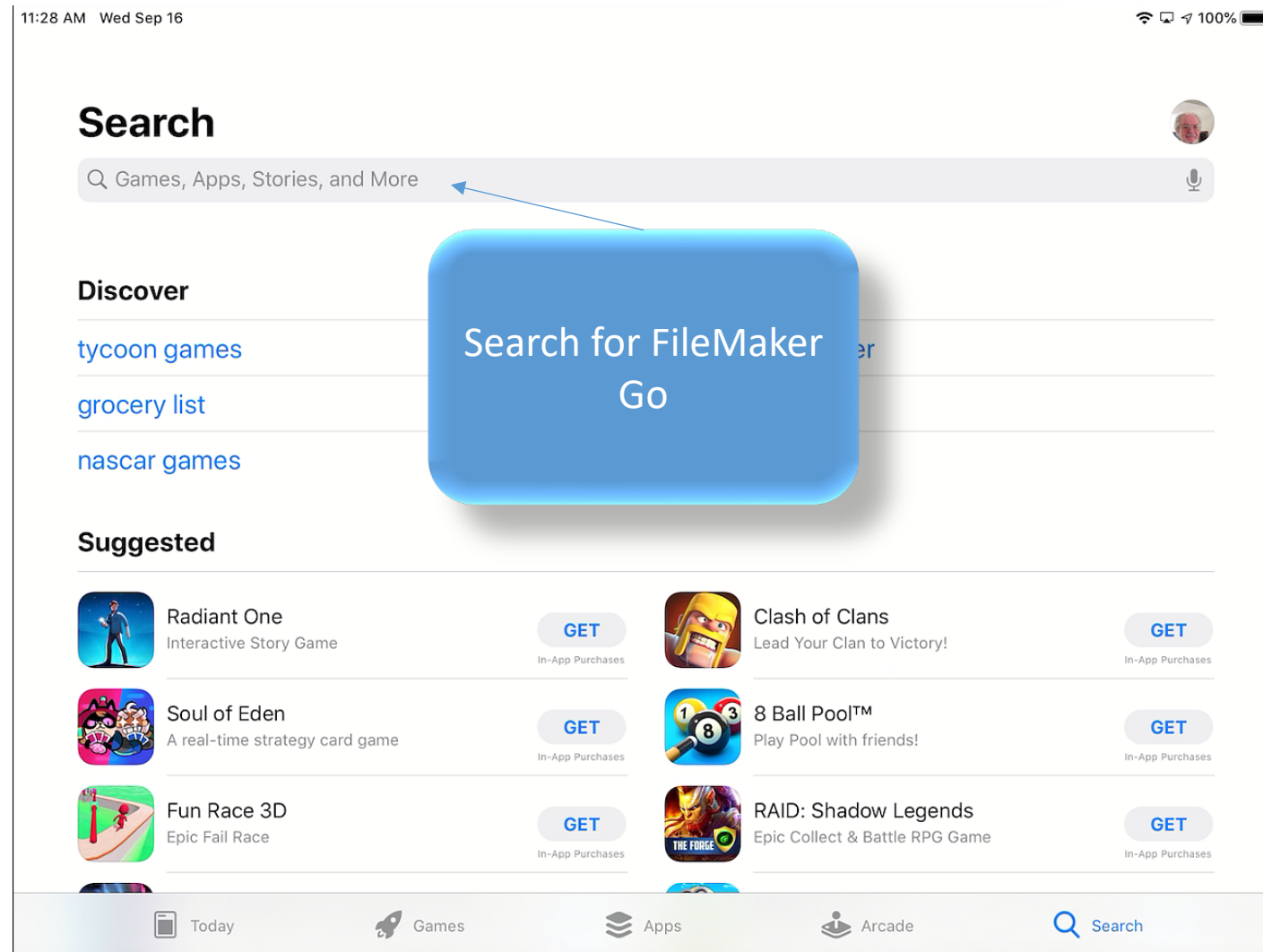
The iPad App Store Screen

ON-GUARD



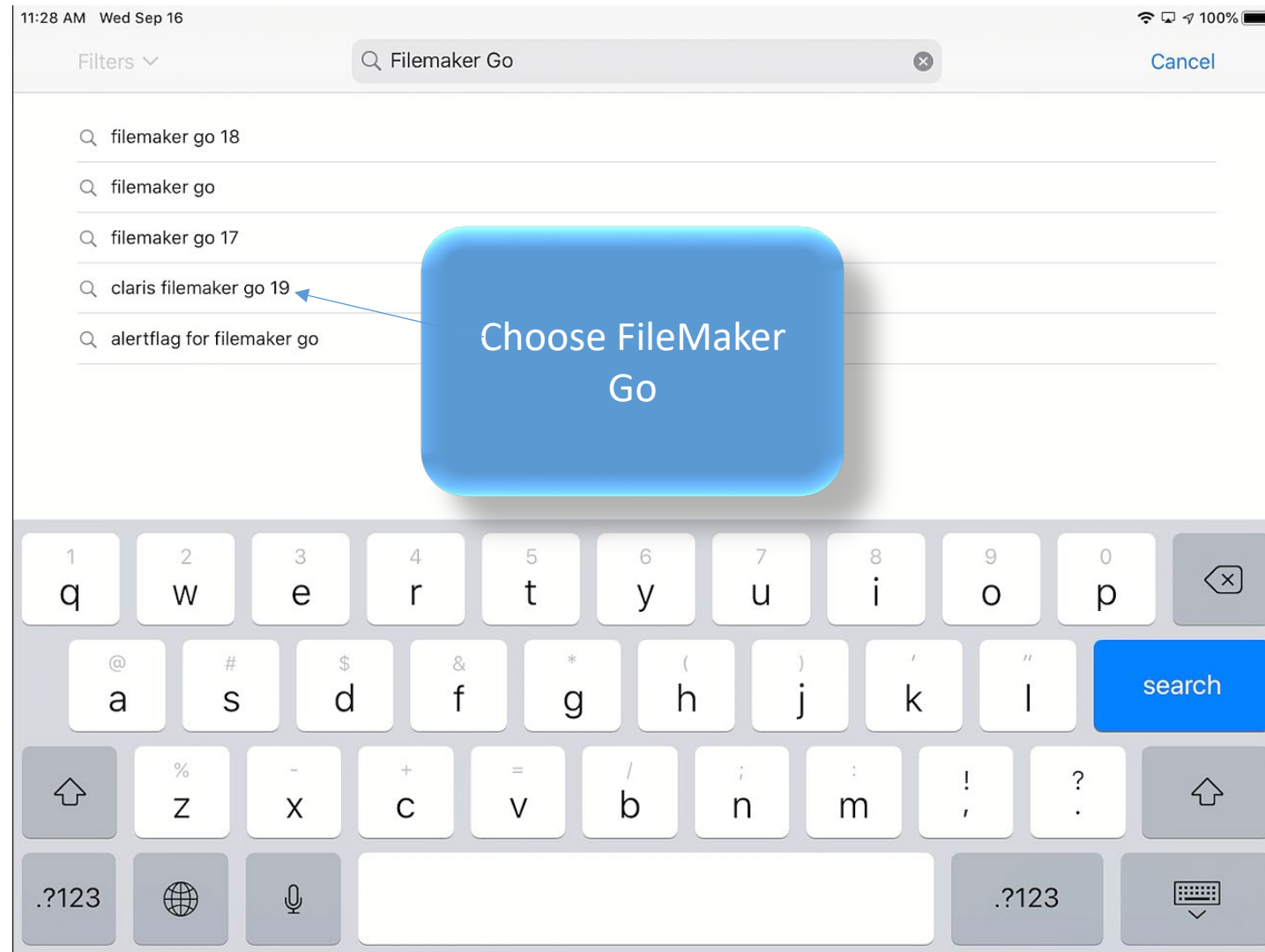
The iPad App Store Screen

ON-GUARD



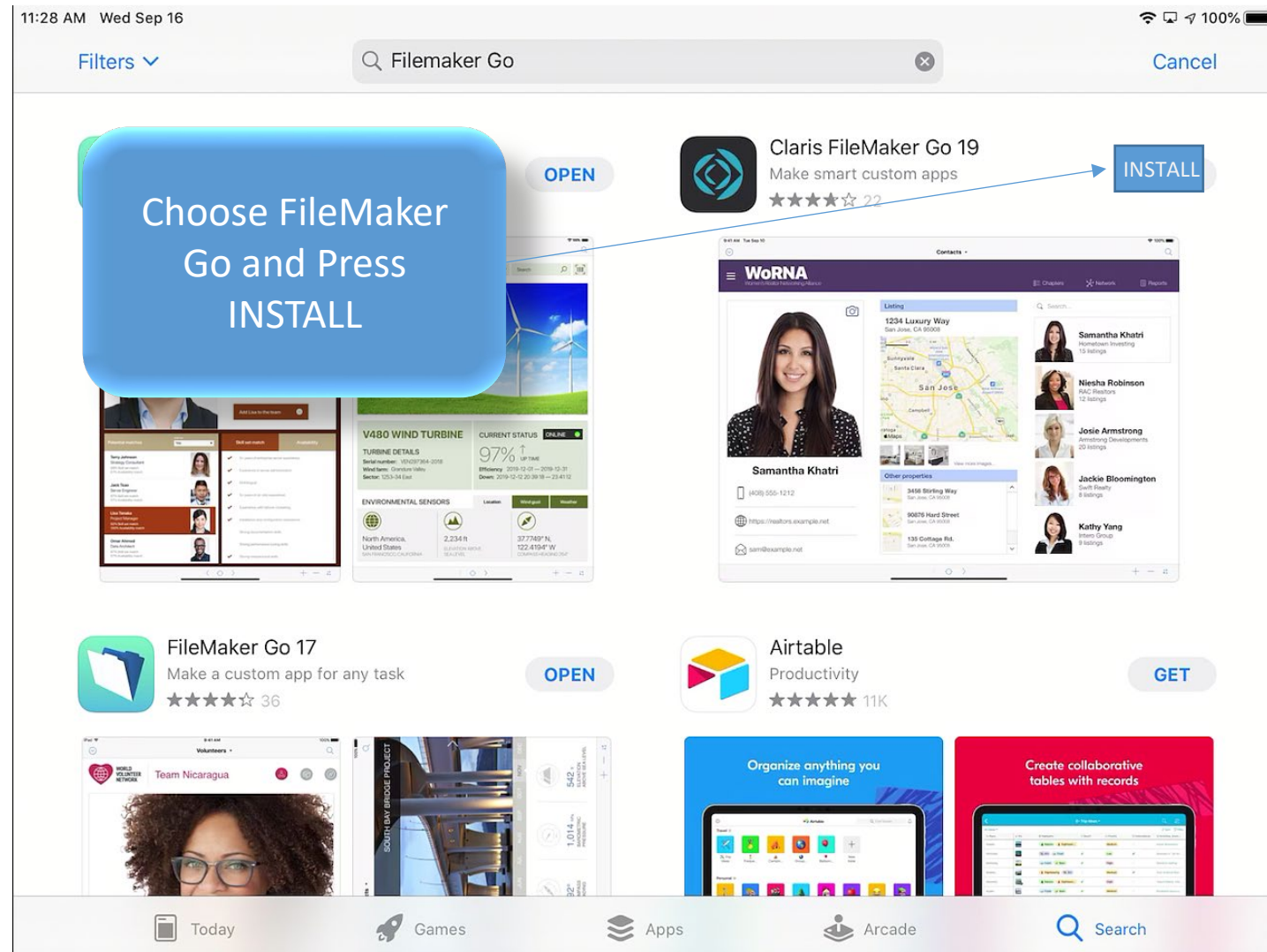
The iPad App Store Screen

ON-GUARD



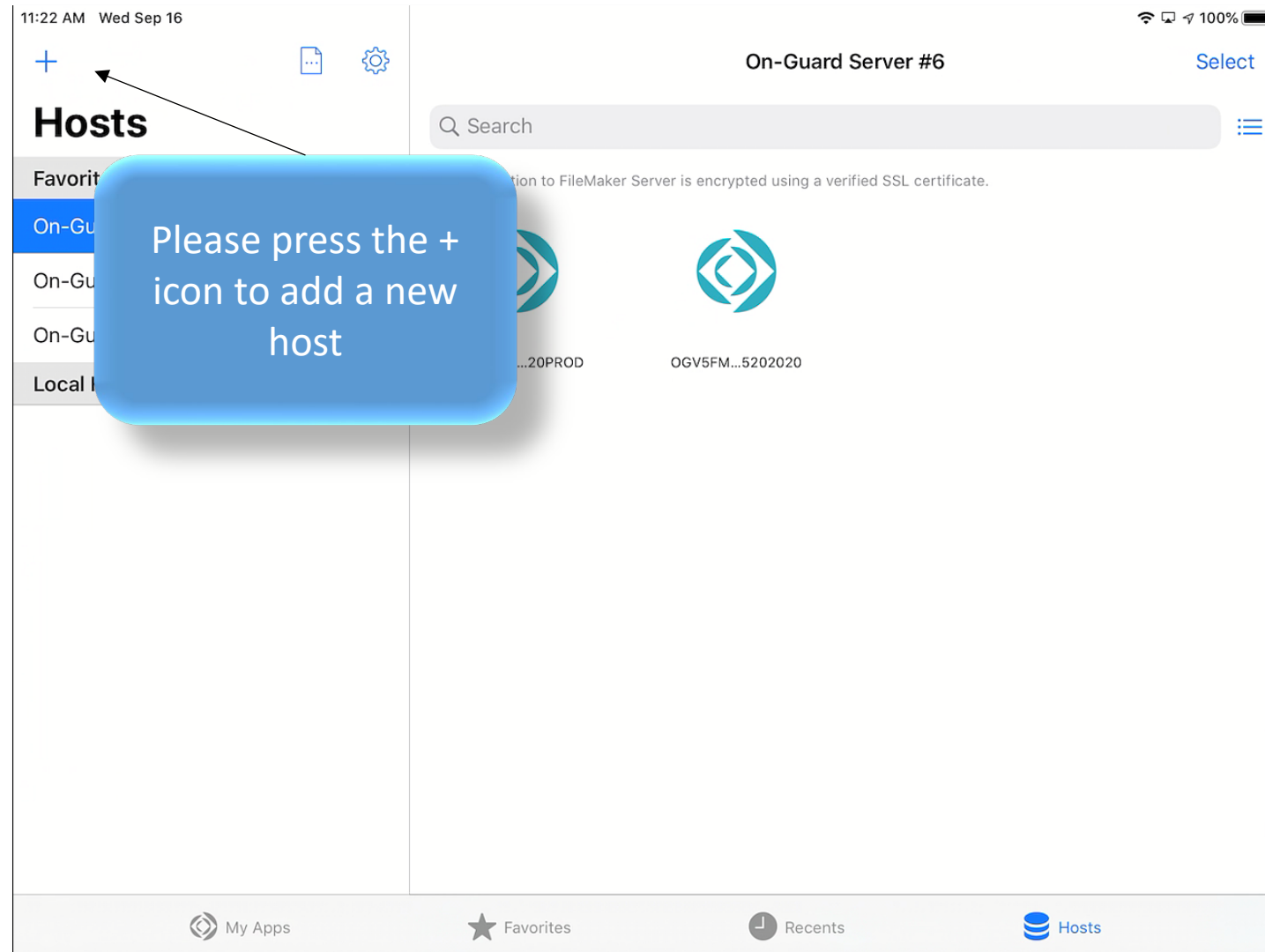
The iPad App Store Screen

ON-GUARD



The iPad Hosts Setup Screen

ON-GUARD



The iPad Hosts Setup Screen

ON-GUARD

11:23 AM Wed Sep 16

Cancel Add Host Save

On-Guard Server #6 Select

HOST ADDRESS

192.168.1.1 or myhost.mydoma...

HOST NAME (OPTIONAL)

My Host

Search

Connection to FileMaker Server is encrypted using a verified SSL certificate.

Please add the designated host per your community instructions

next

.?123 .com .?123

The iPad Hosts Setup Screen

ON-GUARD

The screenshot shows the 'On-Guard Server #6' setup screen on an iPad. At the top, there are buttons for 'Cancel', 'Add Host', and 'Save'. Below these are two input fields: 'HOST ADDRESS' containing 'onguard6.com' and 'HOST NAME (OPTIONAL)' containing 'On-Guard Server #6'. A blue callout box with the text 'In this case the Host is onguard6.com' has two arrows pointing to the 'HOST ADDRESS' and 'HOST NAME (OPTIONAL)' fields. To the right of the input fields is a search bar and a 'Select' button. At the bottom, a virtual keyboard is visible with a 'done' button.

11:24 AM Wed Sep 16

Cancel Add Host Save

On-Guard Server #6 Select

HOST ADDRESS

onguard6.com

HOST NAME (OPTIONAL)

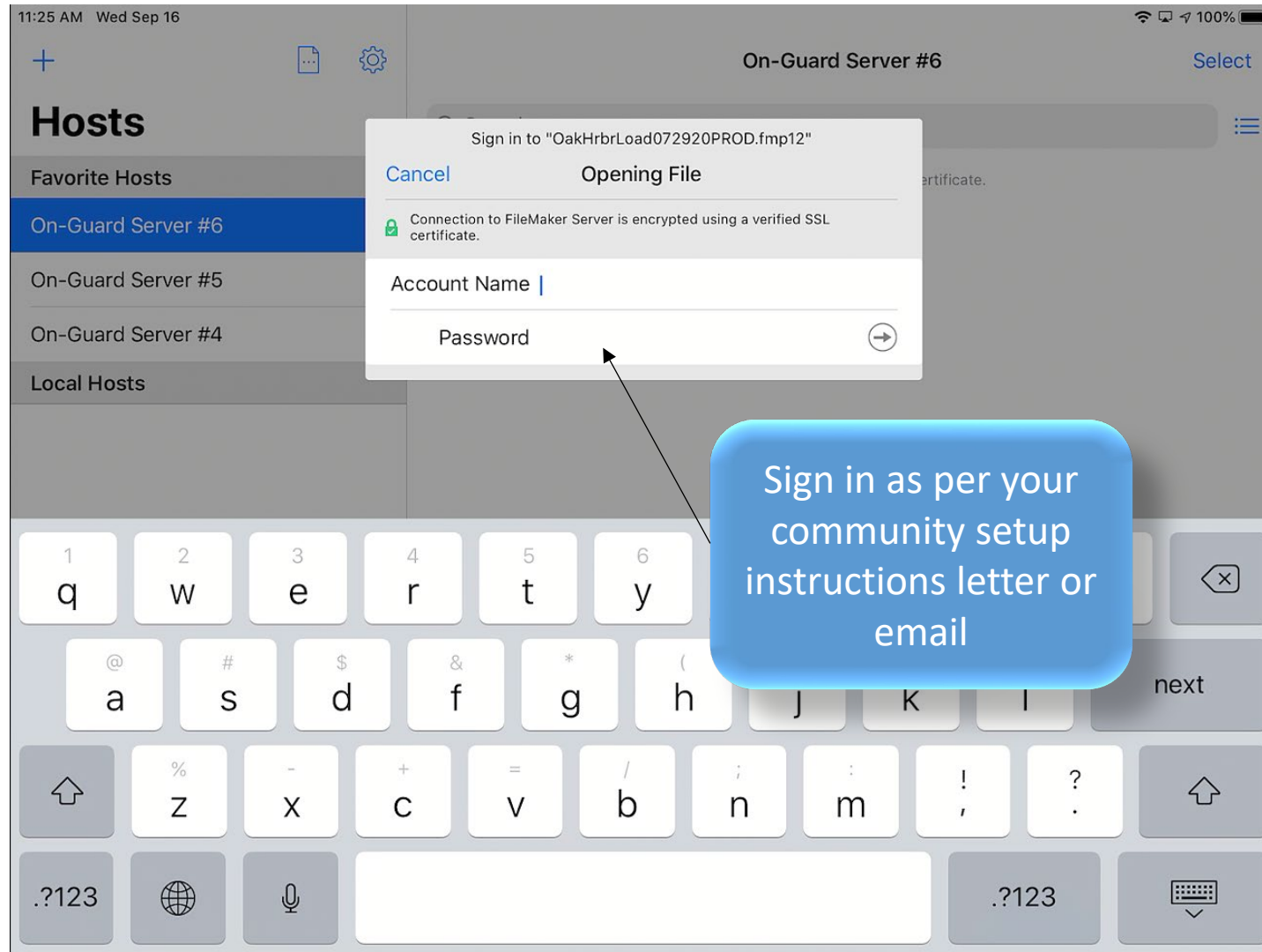
On-Guard Server #6

In this case the Host is onguard6.com

done

The iPad Hosts Setup Screen

ON-GUARD



The iPad Screen

ON-GUARD



ON-GUARD

GATE SECURITY CONTROL



Tutorial Series

Thanks for Watching!